

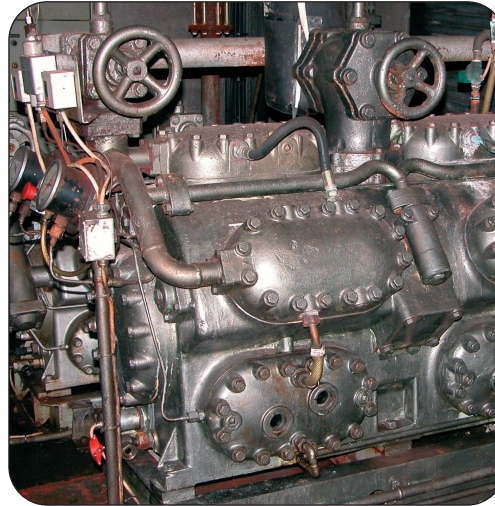
EnviroStart™

THREE PHASE SOFT START TECHNICAL SPECIFICATION



High Specification Electronic Soft Start for Motors from 5.5kW to 800kW at 400V.

- Compact and efficient design
- Adjustable initial pedestal voltage
- Kick start capability with adjustable time and level for stall-load, (high torque), starting
- Ramp-start time adjustable from 0.5 to 240s
- Ramp-down time, adjustable from 2 to 80s
- System Ready, Run / Fault and Top-of-Ramp relays fitted
- Full system status LED display
- 220V, 400V, 570V & 690V units available
- IP43 rated enclosure



THREE PHASE SOFT START

Technical Data for Three Phase EnviroStart Soft Start Units

MODEL	CONTINUOUS CURRENT @ +20°C	kW @ 220V ¹	kW @ 400V ¹	kW @ 690V ¹	WEIGHT kg	FANS 110V or 240V	REPETITIVE STARTS Per Hour ²	POWER DISSIPATION Watts ³	HEIGHT/ WIDTH/DEPTH mm
400-TPSSG6-5.5	12	2.2	5.5	7.5	2	N/A	15	18W	220/145/155
400-TPSSG6-7	16	4	7.5	11	2	N/A	15	40W	220/145/155
400-TPSSG6-11	23	5.5	11	15	3	N/A	15	140W	220/145/175
400-TPSSG6-15	30	7.5	15	22	3	N/A	15	170W	220/145/175
400-TPSSG6-22	45	11	22	30	3	N/A	15	100W	220/145/175
400-TPSSG6-30	60	15	30	45	4	1x120mm	15	150W	330/145/175
400-TPSSG6-37	75	22	37	55	4	1x120mm	15	170W	330/145/175
400-TPSSG6-55	105	30	55	75	15	2x120mm	15	525W	430/254/280
400-TPSSG6-63	120	37	63	90	15	2x120mm	15	640W	430/254/280
400-TPSSG6-75	145	45	75	110	15	2x120mm	15	520W	430/254/280
400-TPSSG6-90	170	55	90	132	16	2x120mm	12	490W	430/254/280
400-TPSSG6-110	205	63	110	150	16	2x120mm	12	530W	430/254/280
400-TPSSG6-132	255	75	132	186	28	3x120mm	12	650W	580/368/228
400-TPSSG6-150	290	90	150	225	28	3x120mm	12	750W	580/368/228
400-TPSSG6-186	340	110	186	260	28	3x120mm	12	1020W	580/368/228
400-TPSSG6-225	410	132	225	315	28	3x120mm	12	1100W	580/368/228
400-TPSSG6-260	475	150	260	375	45	3x150mm	12	1250W	720/462/253
400-TPSSG6-315	580	186	315	450	45	3x150mm	12	1500W	720/462/253
400-TPSSG6-375	670	215	375	500	45	3x150mm	12	2000W	720/462/253
400-TPSSG6-450	800	260	450	630	120	2x220mm	12	2400W	910/650/340
400-TPSSG6-500	900	315	500	750	120	2x220mm	10	3000W	910/650/340
400-TPSSG6-630	1100	375	630	900	120	2x220mm	10	3500W	910/650/340
400-TPSSG6-800	1400	450	800	1200	120	2x220mm	10	4000W	910/650/340

1. The kW ratings given are all derived from calculations based on a standard four pole motor operating at a nominal ambient of +20°C at sea level. All units should be selected based on the current rating of the motor to which it is to be fitted.

2. The indicated maximum repetitive start count is calculated based on maximum valid ambient of +40°C and with the motor running at full load current. Reducing either of these conditions will increase the start repetition capability of the unit.

3. Power dissipation is calculated for when the unit is running at full power output as defined by maximum continuous current at +20°C.

Saving energy through the control of power

www.EnviroStart.com

EnviroStart™

ELECTRICAL SPECIFICATION

SUPPLY VOLTAGE	220V or 400V selected on PCB (570V & 690V Units Available) -10% - +15%
FREQUENCY	50 or 60Hz selected on PCB
START DUTY AT 12 STARTS PER HOUR	5.5kW to 37kW units 5x unit rating in Amps for 5s 3x unit rating in Amps for 20s 2x unit rating in Amps for 40s 55kW to 800kW units 5x unit rating in Amps for 5s 3x unit rating in Amps for 30s 2x unit rating in Amps for 60s
STARTS PER HOUR	12 evenly spaced starts per hour (average)

CONTROL SPECIFICATION

PEDESTAL RANGE	25 -100% of supply voltage (6% -100% DOL Torque)
RAMP UP TIME	0.5s - 240s
RAMP DOWN TIME	2s to 80s (Independent of Ramp-up)
CURRENT LIMIT RANGE	1.5 - 4.5 x FLC (Normal ramp hold time 30s)
CURRENT LIMIT TIME	Current limit time extendable to 240s
KICK START	Switchable
KICK START LEVEL	70% to 90% Volts
KICK START TIME	0.25s to 2s
POWER SWITCHING	Fully base-isolated thyristor Paks or independent Puks
CONTROL CIRCUITRY	High frequency MPU with full internal watch keeping and protocol management systems
CONTROL BOARD	Multi layer PCB with high voltage tracking and optional high relative humidity environmental protection
CONTROL SUPPLY	Derived from three phase input or external supply, (user selectable)
STALLED ROTOR PROTECTION	Fault trip in case of detected extended asynchronous rotor speed
FAULT DETECTION	Shut Down and Lockout on: Phase Loss, Supply Loss, Motor Fault, Thyristor or PCB Fault, Asynchronous Motor Rotation, Over Temperature Detection on 55kW and above
RESET	Onboard switch or through power off to ensure safe fault condition shut down
LED INDICATIONS	Ramp Up / Power On / Run / In Current Limit / Top of Ramp
ON PCB RELAYS	System Ready, Fault Condition / Run, (switch selectable), and Top of Ramp. - (All 2 pole changeover with two N/O and N/C contacts)
RELAY CONTACT RATING	2.2kVA, 250V AC maximum
MECHANICAL PROTECTION	IP43, NEMA 1 Sheet Metal Enclosure or High Impact ABS cover on Heatsink Backplane (Dependant on kW rating)

ENVIRONMENTAL SPECIFICATION

OPERATING TEMP	0°C - +40°C @ < 95%RH (De-rate 20%/10°C above +40°C)
STORAGE TEMP	-10°C - +60°C
ALTITUDE	Nominal 2000m above sea level. De-rate Amps by 1%/100m above 2000m
EU DIRECTIVES	Meets all EMC and Low Voltage Directives. (including G5/4)
UL LISTING	Listed for US and Canadian use File E192379 (55kW to 800kW units)

COOLING

COOLING	Naturally cooled isolated heatsink up to 22kW. Fan cooled for 30kW and above (240/110V supply required for fans)
THERMAL CUT OUT	Automatically cuts out in event of over-temperature on heatsink

All details relate to units operating with a 400V synchronous three phase sinusoidal supply.



ems
European Ltd

Unit 1, 67 Nairn Road, Bloxwich, Walsall WS3 3XB. England
Tel: +44 (0)1922 491063 Fax: +44 (0)1922 491064
E-mail: info@EnviroStart.com
www.EnviroStart.com

Manufactured & Distributed Worldwide by EMS European Ltd.

THREE PHASE SOFT START

Saving energy through the control of power

www.EnviroStart.com